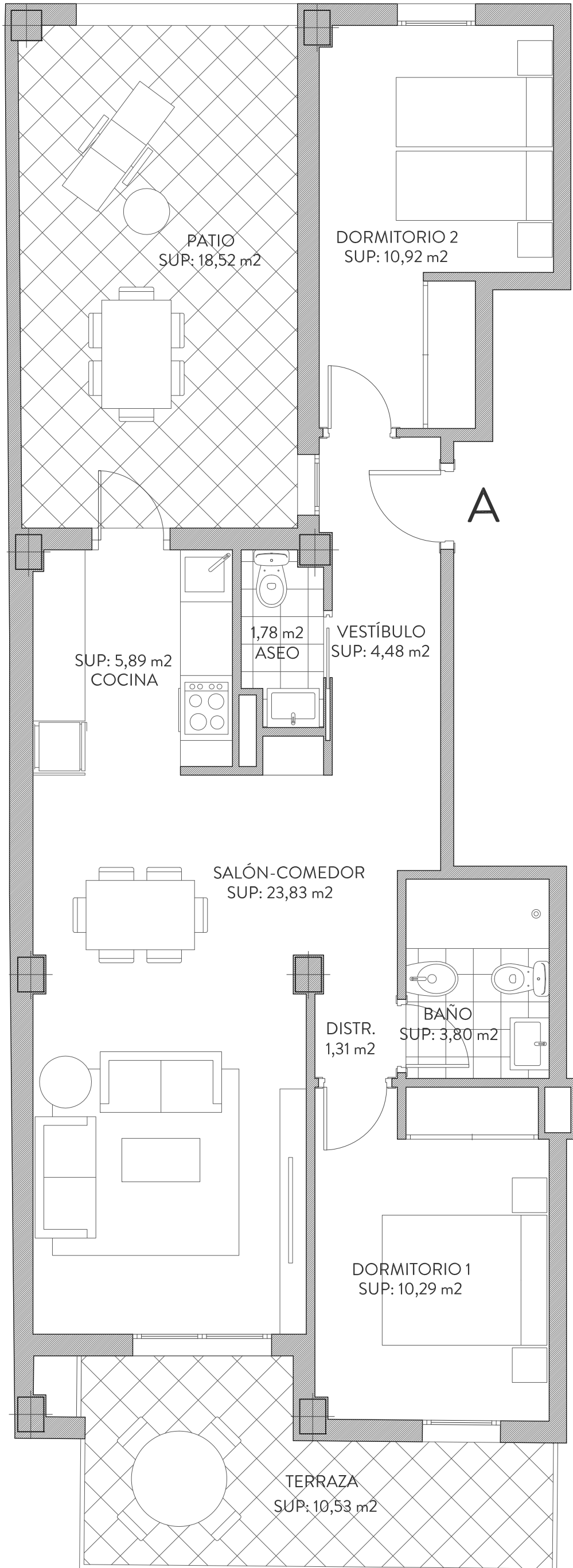
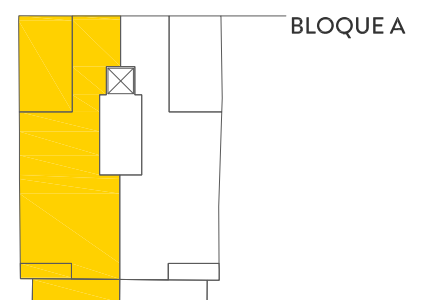
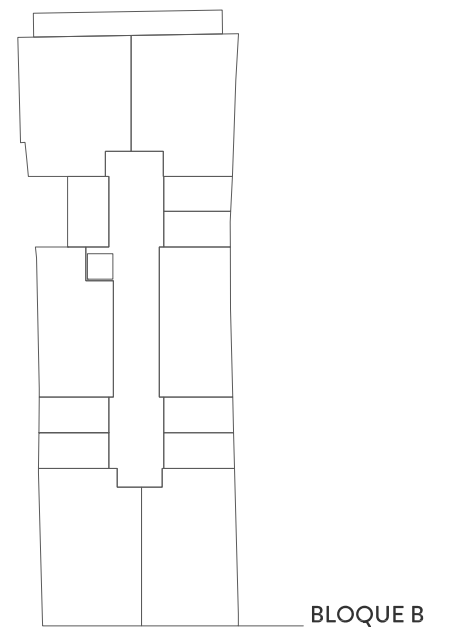


BLOQUE A_1º A



SUPERFICIES

VIVIENDA	ÚTILES	CONSTRUIDA	CONSTRUIDA CON P.COMUNES
	62.30 m ²	84.96 m ²	102.05 m ²
TERRAZA	10.53 m ²		
PATIO/SOLARIUM	18.52 m ²		



ESCALA_1:50

