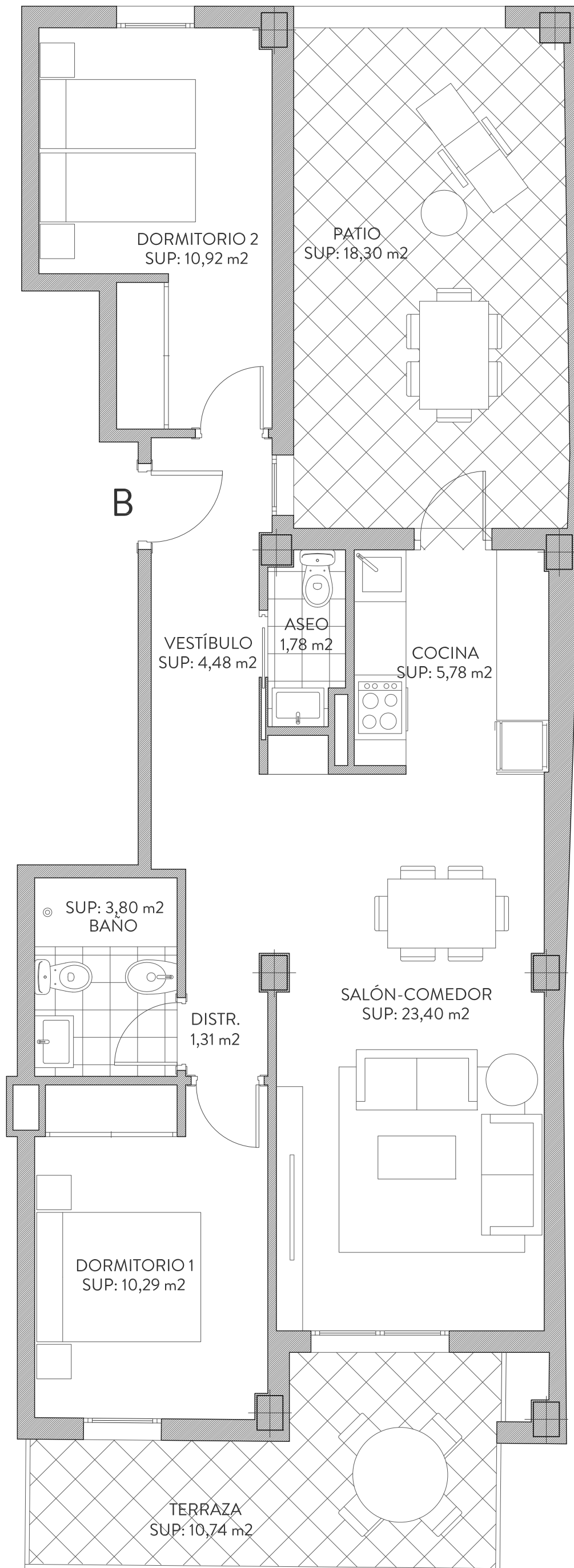
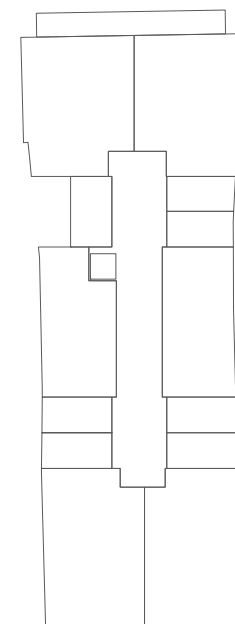


BLOQUE A_1º B

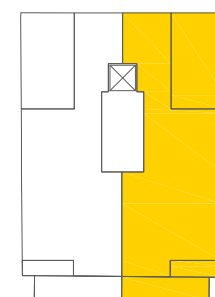


SUPERFICIES

VIVIENDA	ÚTILES	CONSTRUIDA	CONSTRUIDA CON P.COMUNES
	61.76 m ²	88.07 m ²	105.78 m ²
TERRAZA	10.74 m ²		
PATIO/SOLARIUM	18.30 m ²		



BLOQUE B



BLOQUE A



ESCALA_1:50

