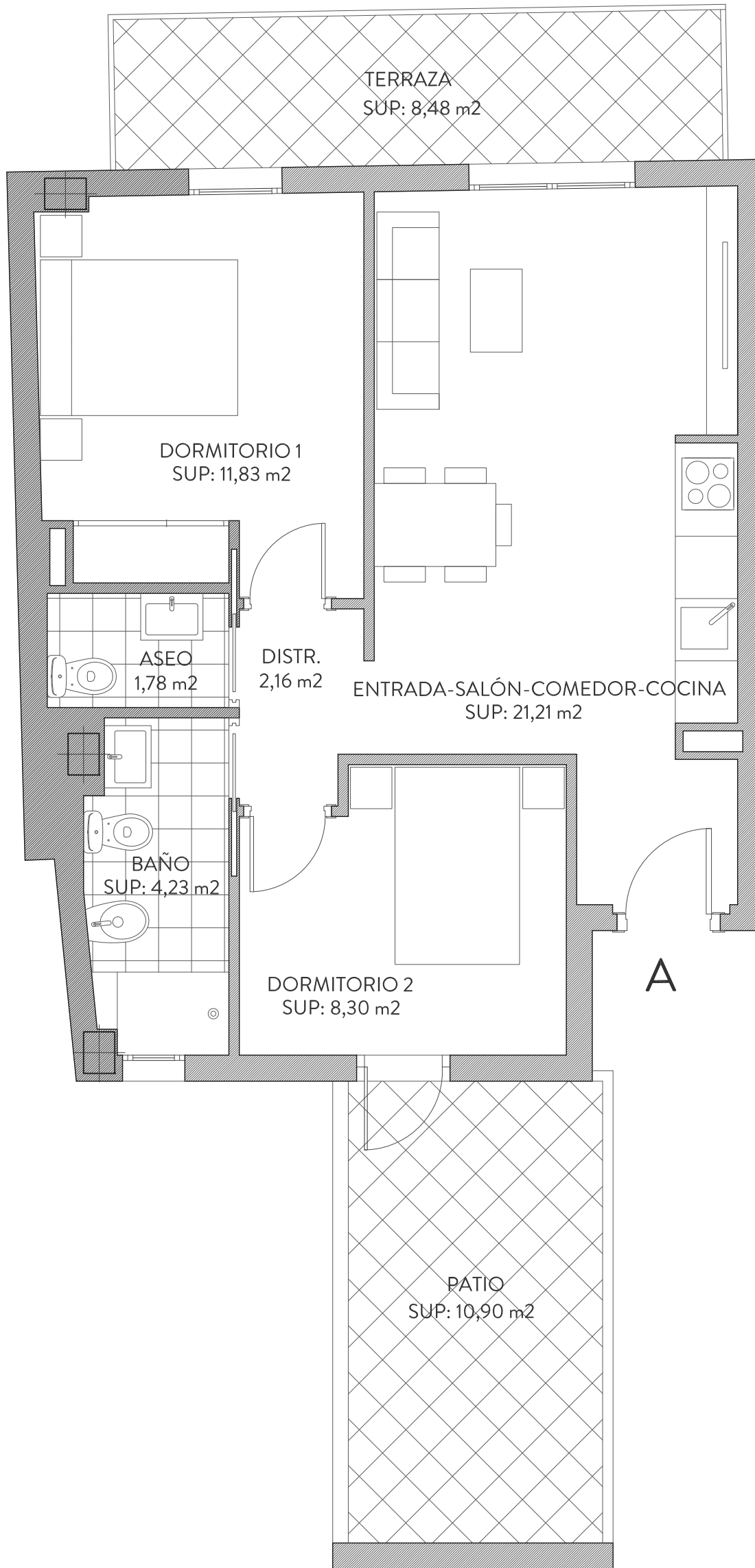
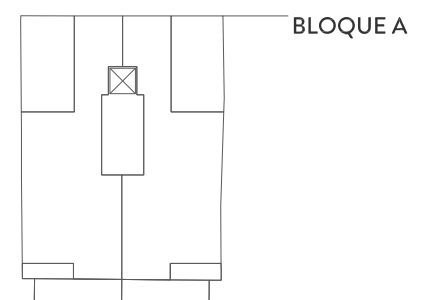
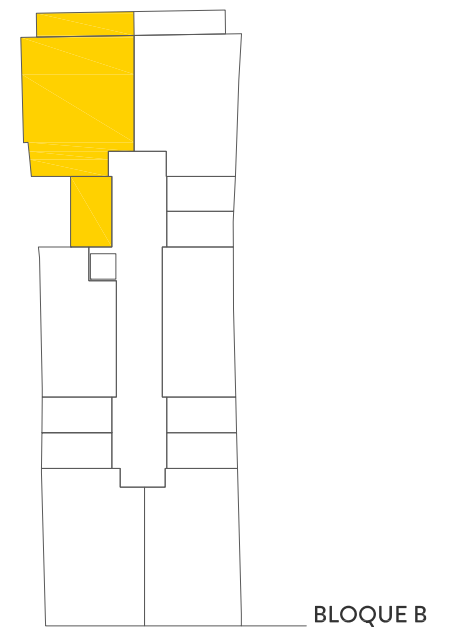


BLOQUE B_1º A



SUPERFICIES

VIVIENDA	ÚTILES	CONSTRUIDA	CONSTRUIDA CON P.COMUNES
	49.51 m ²	67.56 m ²	81.42 m ²
TERRAZA	8.48 m ²		
PATIO/SOLARIUM	10.90 m ²		



ESCALA_1:50

