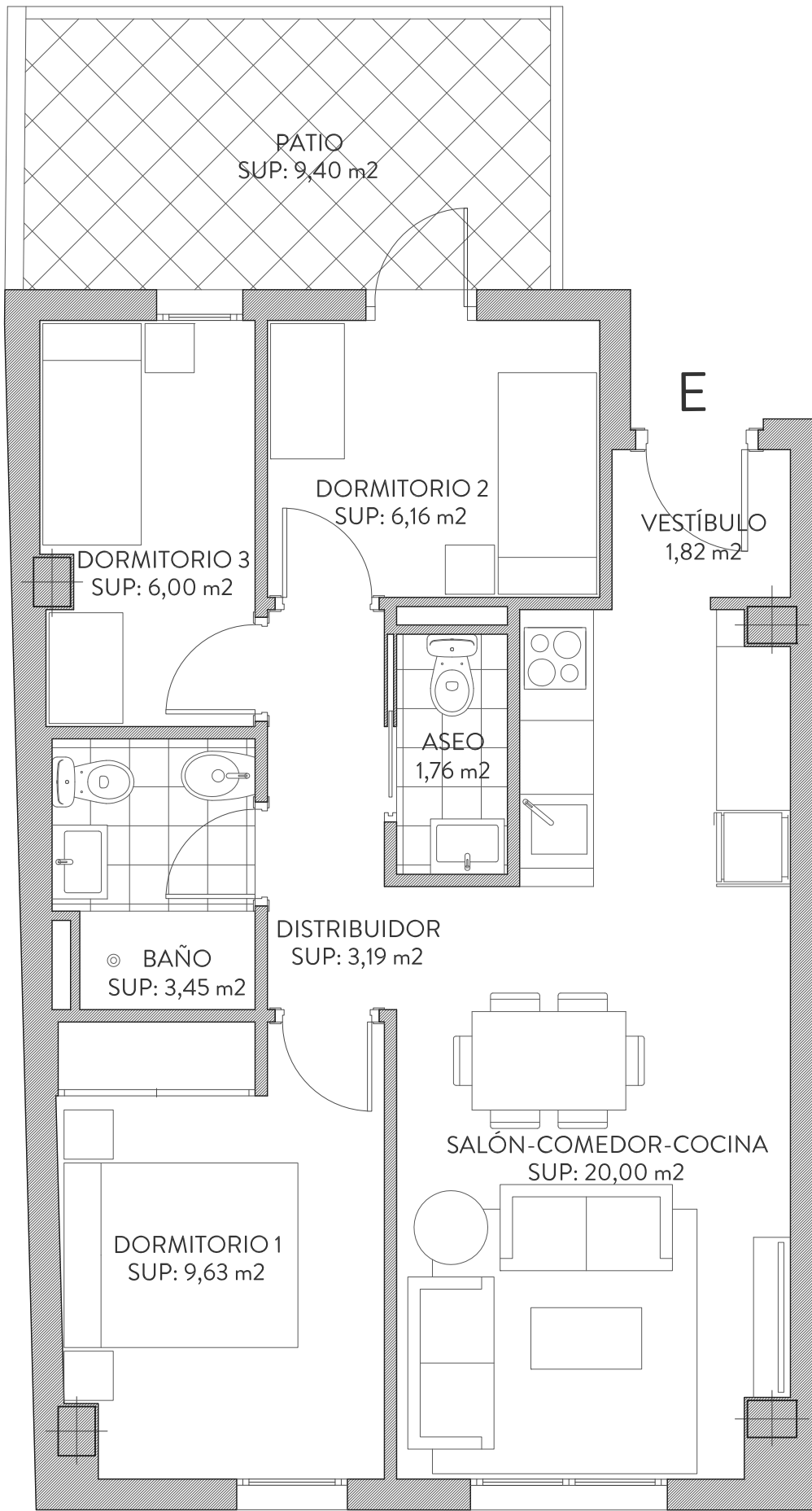
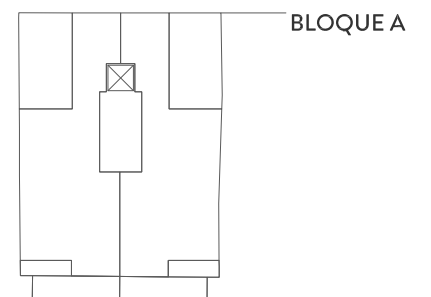
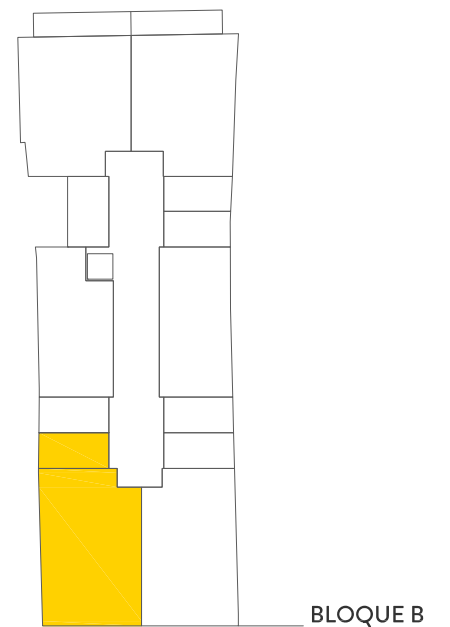


# BLOQUE B\_1º E



## SUPERFICIES

VIVIENDA	ÚTILES	CONSTRUIDA	CONSTRUIDA CON P.COMUNES
	52.01 m <sup>2</sup>	61.28 m <sup>2</sup>	73.85 m <sup>2</sup>
TERRAZA			
PATIO/SOLARIUM	9.40 m <sup>2</sup>		



ESCALA\_1:50

