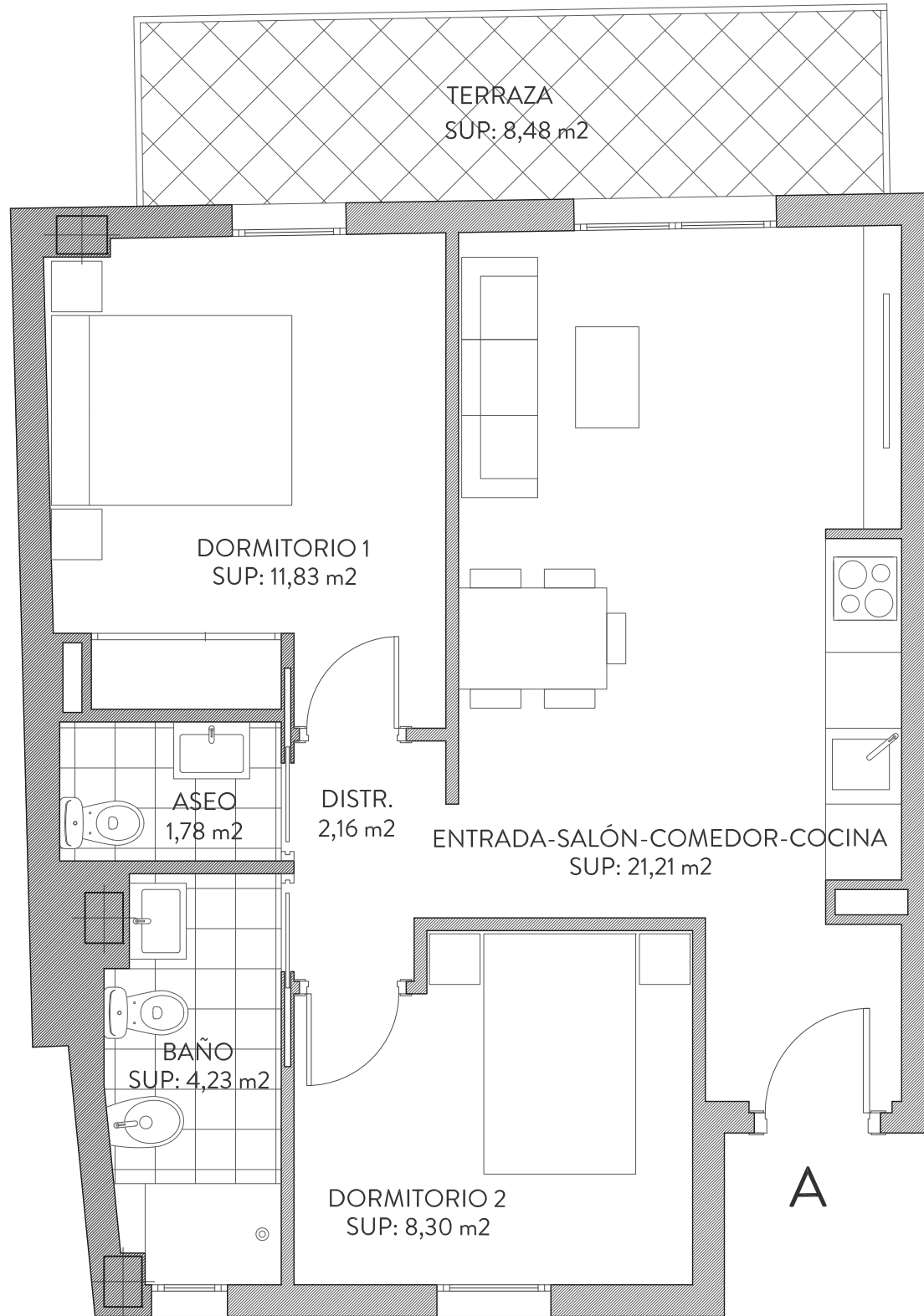
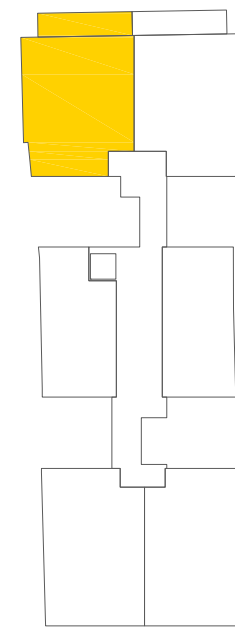


BLOQUE B_2º A

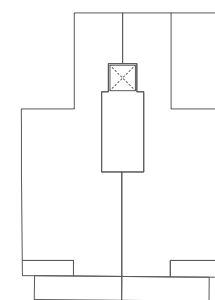


SUPERFICIES

VIVIENDA	ÚTILES	CONSTRUIDA	CONSTRUIDA CON P.COMUNES
	49.51 m ²	67.56 m ²	81.42 m ²
TERRAZA	8.48 m ²		
PATIO/SOLARIUM			



BLOQUE B



BLOQUE A



ESCALA_1:50

