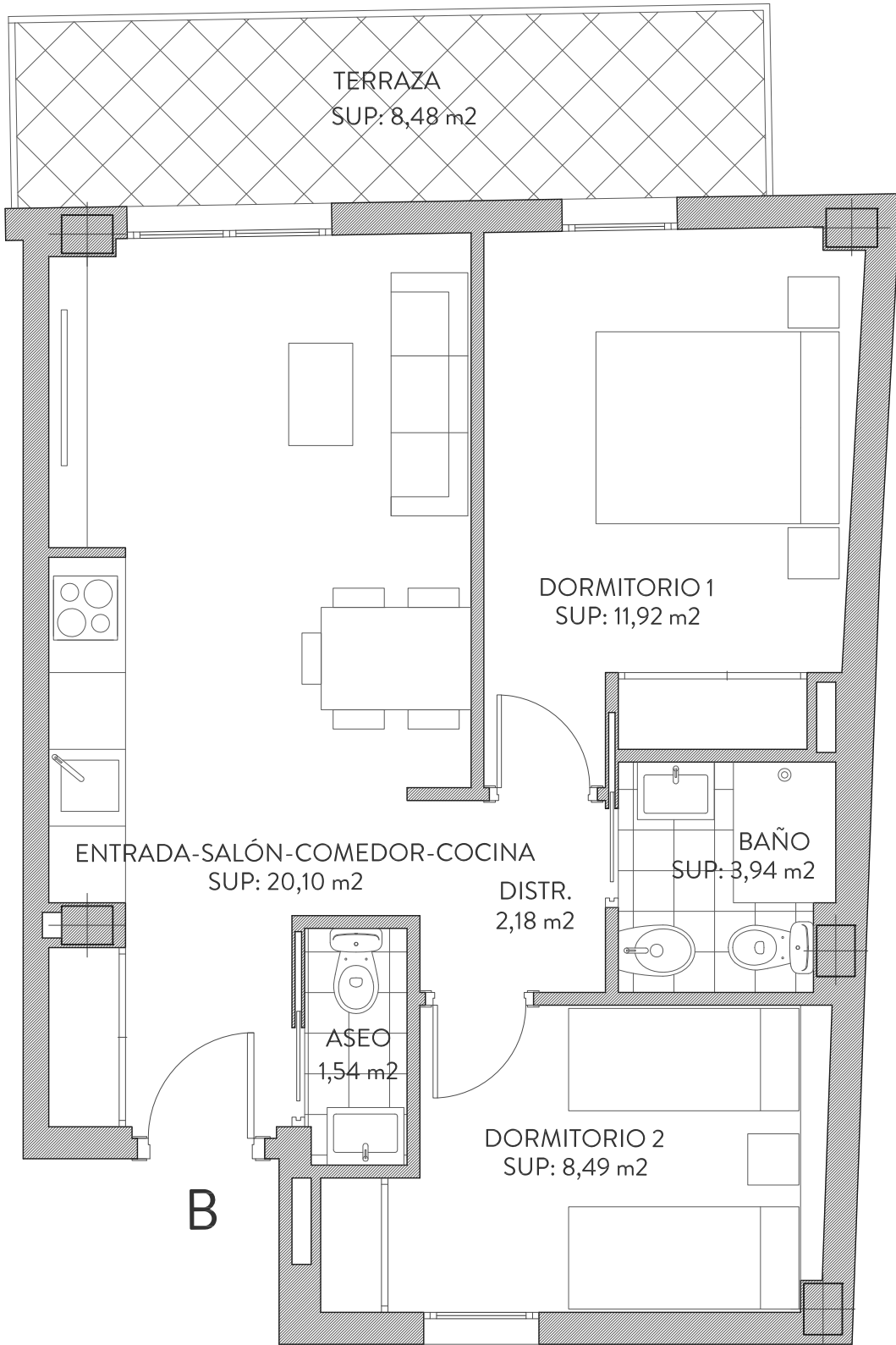
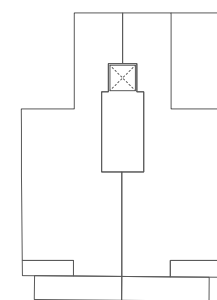
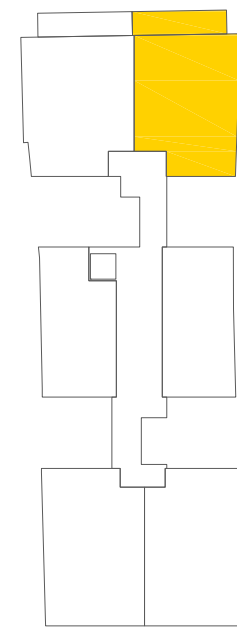


# BLOQUE B\_2º B



## SUPERFICIES

VIVIENDA	ÚTILES	CONSTRUIDA	CONSTRUIDA CON P.COMUNES
	48.17 m <sup>2</sup>	64.23 m <sup>2</sup>	77.41 m <sup>2</sup>
TERRAZA	8.48 m <sup>2</sup>		
PATIO/SOLARIUM			



ESCALA\_1:50

